



CAREERS

BULLETIN

AUTUMN TERM
YEAR 10

Career of the term

Explore what the day to day activities in the life of a Hairdresser are and the skills and entry requirements needed for this career pathway



<https://www.unifrog.org/student/careers/direct/hairdresser>

Labour market information

The careerometer can be used to explore and compare key information about occupations, help you learn about different occupations and identify potential careers.

It provides access to a selection of UK headline data relating to pay, weekly hours of work and future employment prospects for different occupations, as well as description of the occupation.

https://www.lmiforall.org.uk/explore_lmi/

UK Average	
Weekly Pay £505	Annual Pay £26,260
Hours/Week 37.5h	Hourly Pay £13
Workforce Change (projected)	
Growth 6%	
<small>The workforce is projected to grow by 6% over the period to 2024, creating 1,974,000 jobs.</small>	
<small>This is the average combined for all industries across the UK. The pay and hours are that of an average full-time employee in this job, including bonuses, before tax and deductions.</small>	

Upcoming guest speaker



Christopher Harper from Severn Trent will be discussing sewers in the GCSE Science curriculum and career pathways on Wednesday 1st October.



Unifrog Activities



Complete Unifrog 101: 14-16 course

<https://www.unifrog.org/student/courses/69>

Learn how to access all the features and get the most out of the platform after starting your GCSE's

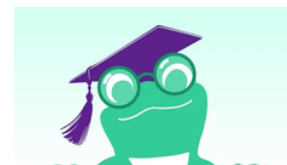


Complete your CV

Use the CV creator tool on unifrog to craft your perfect CV ready for applying for Work Experience places

Unifrog Webinar Unifrog UK University Fair

Tuesday 14 October @ 16:00 UK time
- 2hrs 30 mins



<https://www.unifrog.org/events/upcoming/1497-preview>

**Complete Future skills
questionnaire Emailed from
Compass+**

Unifrog parent code: MOParent